

Situation Gesamtüberbauung



Landanteil:

Haus L: ca. 446 m²

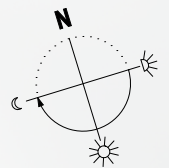
Haus M: ca. 405 m²

Haus N: ca. 415 m²

Haus O: ca. 410 m²

Haus P: ca. 399 m²

Haus Q: ca. 397 m²



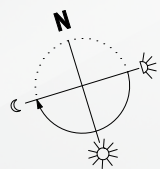
Geländeschnitt Gesamtüberbauung



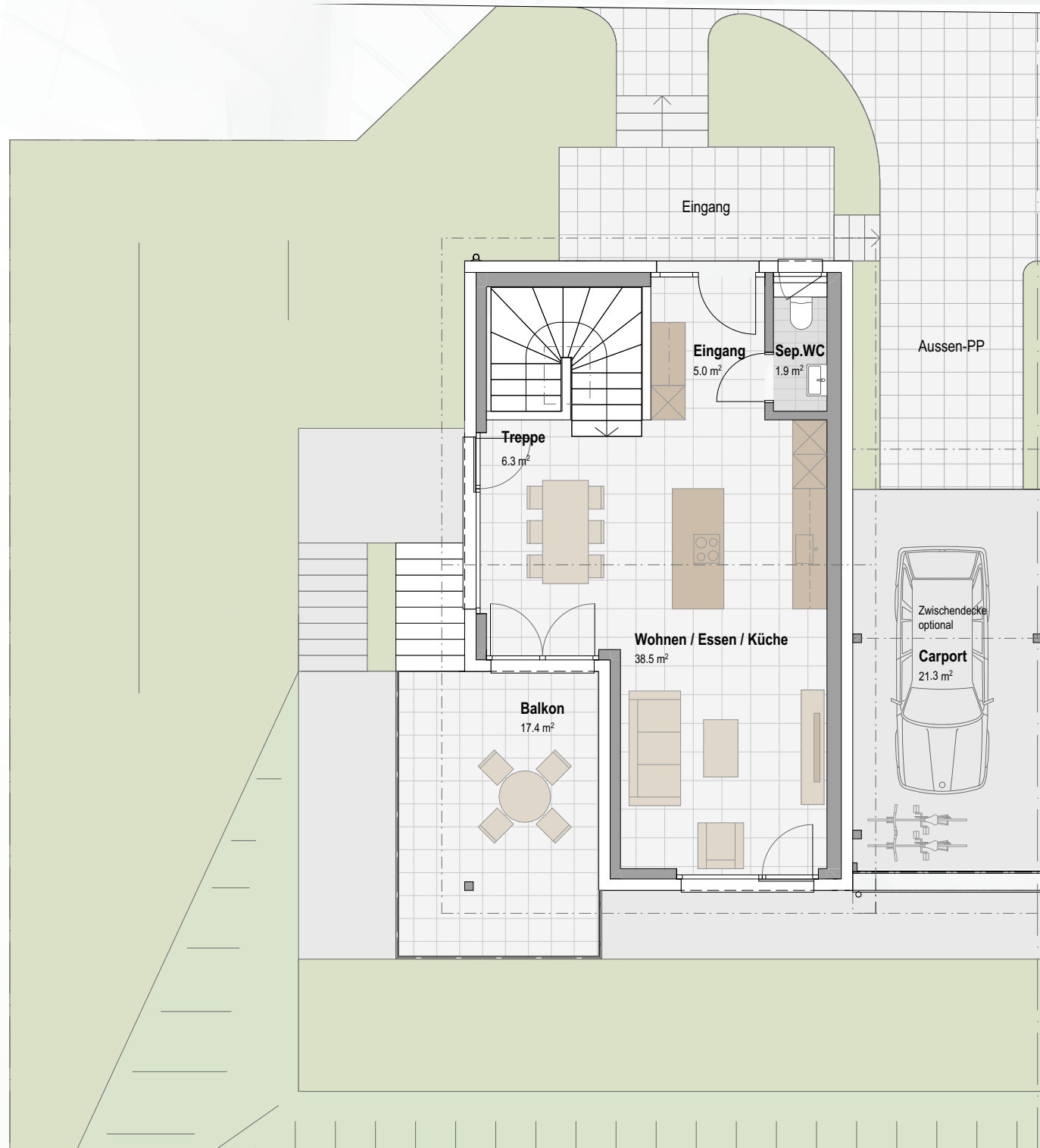
Grundriss Obergeschoss

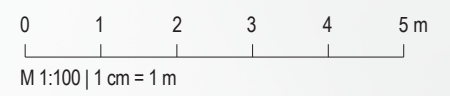
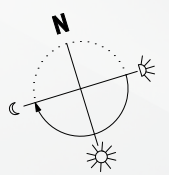
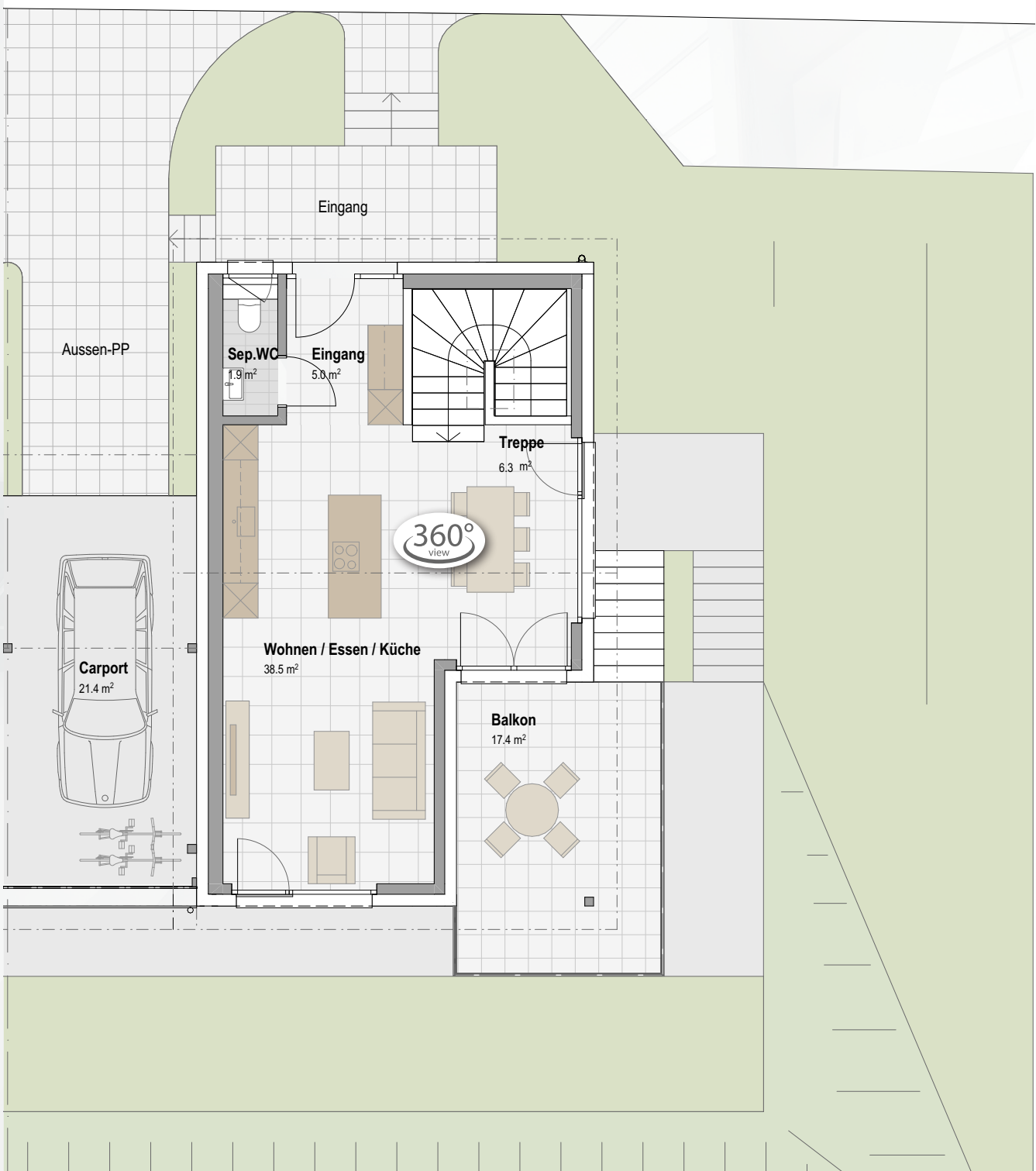
Kennzahlen D-EFH

Anzahl Zimmer:	4½
Nettowohnfläche EG:	63.1 m ²
Nettowohnfläche OG:	51.7m ²
Nettowohnfläche total:	114.8 m²
Keller / Waschen:	15.5 m ²
Technik (gemeinsam):	14.4 m ²
Balkon:	17.4 m ²
Carport:	21.3 m ²

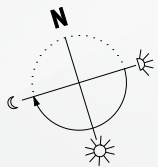
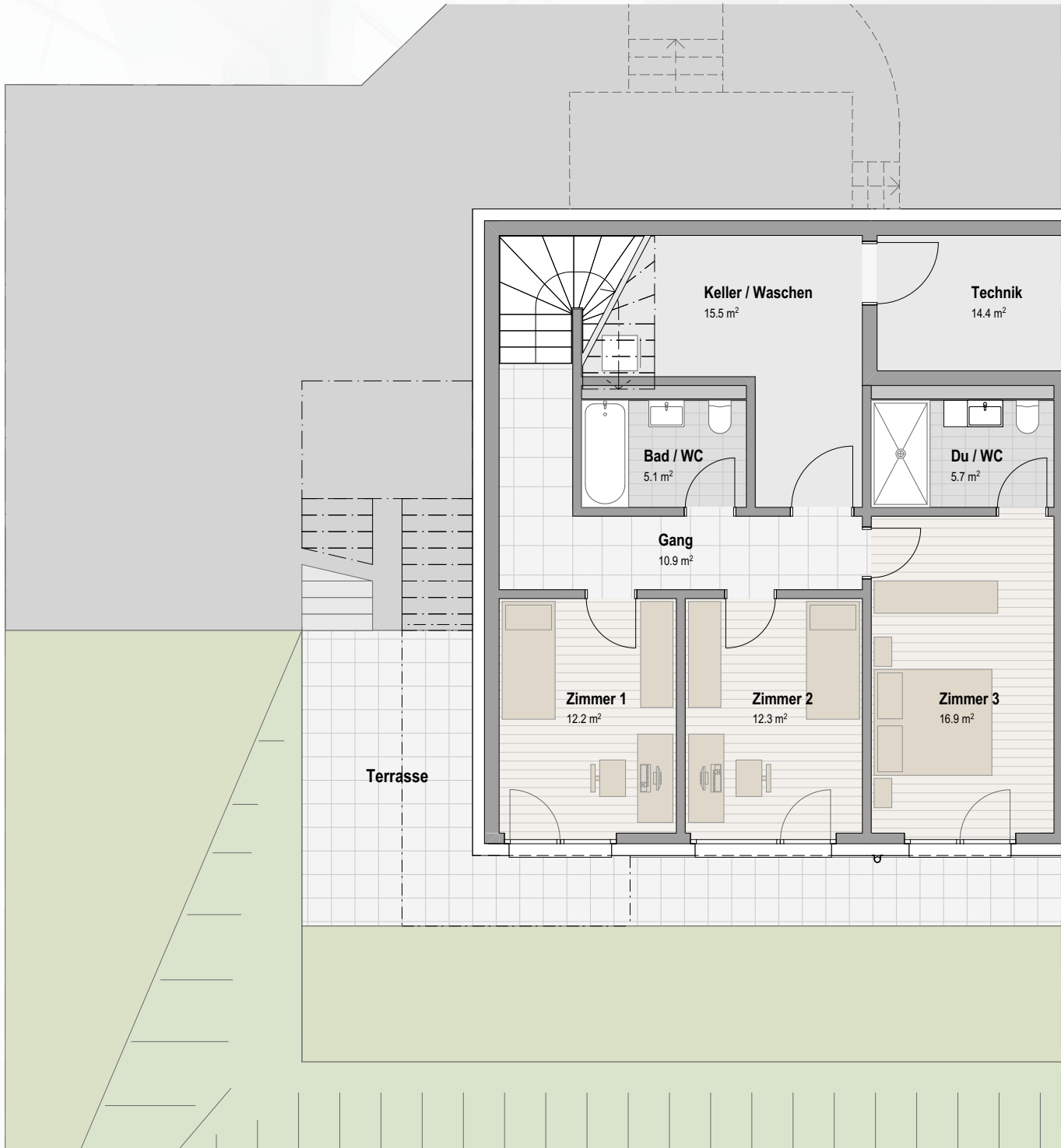


0 1 2 3 4 5 m
M 1:100 | 1 cm = 1 m





Grundriss Erdgeschoss



0 1 2 3 4 5 m
M 1:100 | 1 cm = 1 m

