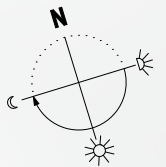


Situation Gesamtüberbauung

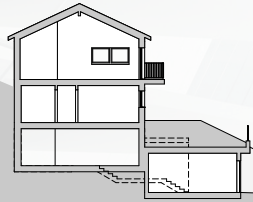


Landanteil:
Haus J: ca. 797 m²
Haus K: ca. 712 m²
Haus R: ca. 778 m²

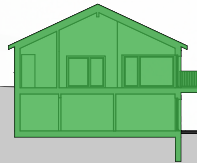


Geländeschnitt Gesamtüberbauung

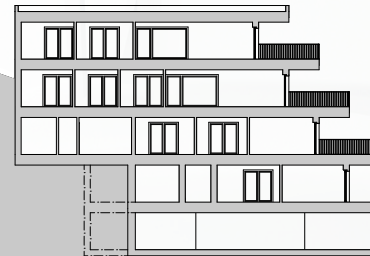
EFH
Häuser A-I



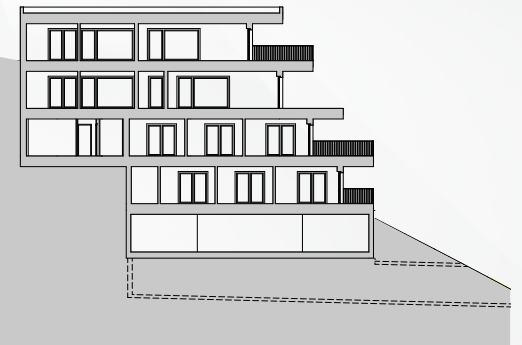
EFH + DEFH
Häuser J-R



MFH
Häuser 4-7



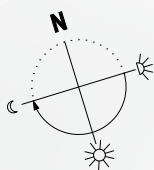
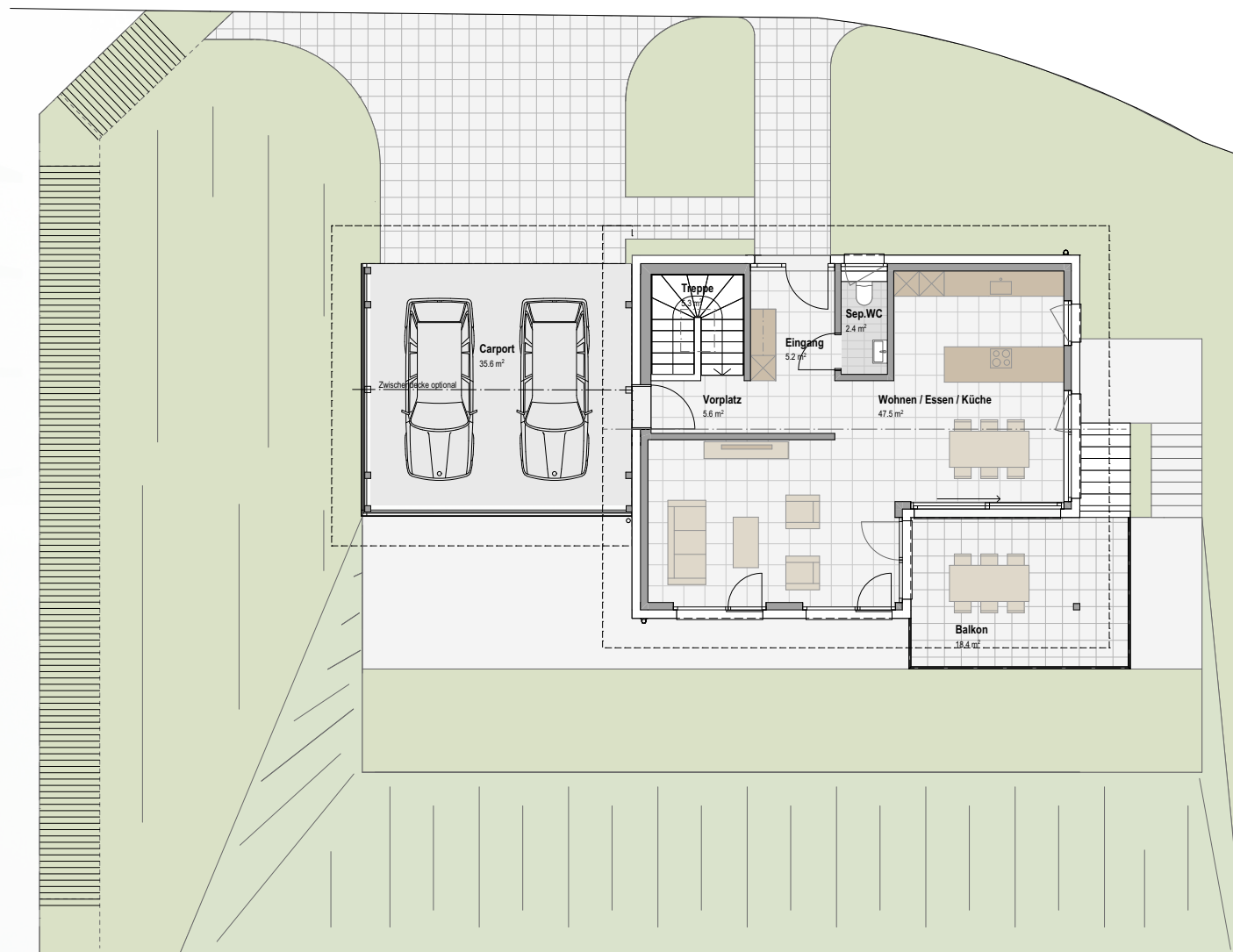
MFH (WA)
Häuser 1-3



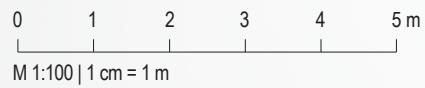
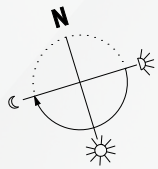
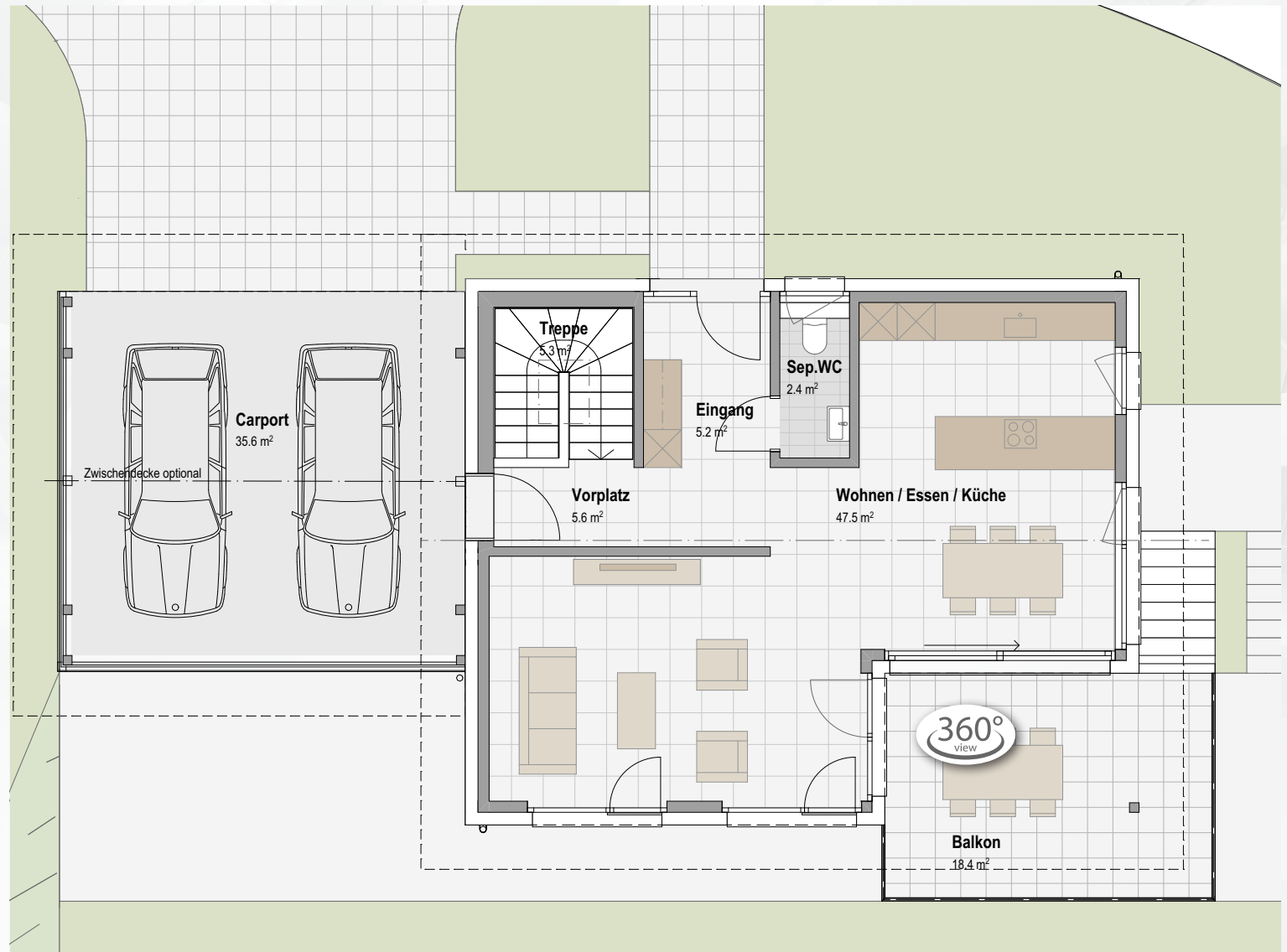
Obergeschoss mit Umgebung

Kennzahlen EFH

Anzahl Zimmer:	4½
Nettowohnfläche OG:	66.0 m ²
Nettowohnfläche EG:	68.4 m ²
Nettowohnfläche total:	134.4 m²
Keller:	20.2 m ²
Technik:	12.7 m ²
Balkonfläche:	18.4 m ²
Carport:	35.6 m ²



Grundriss Obergeschoss



Grundriss Erdgeschoss

