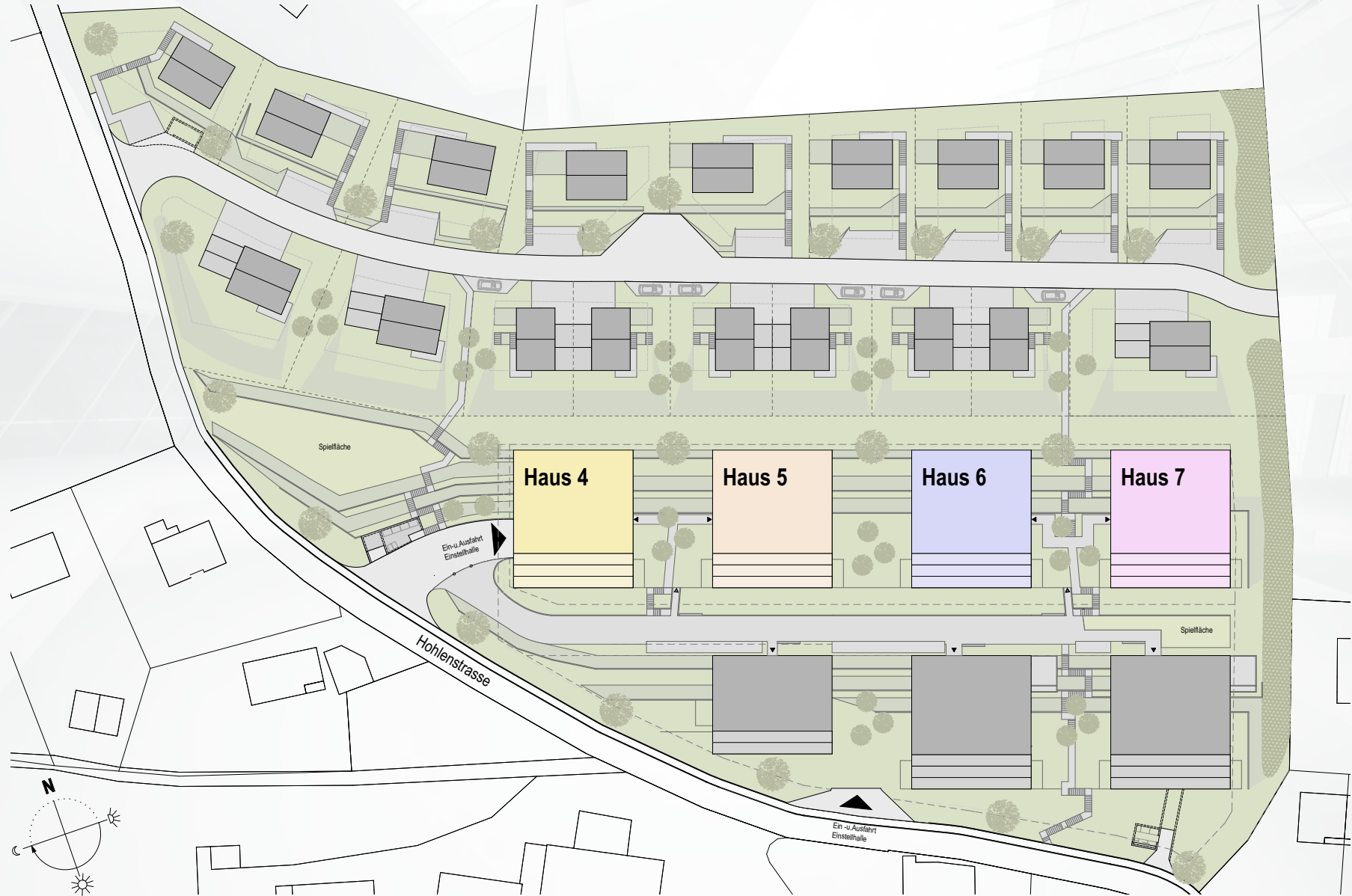
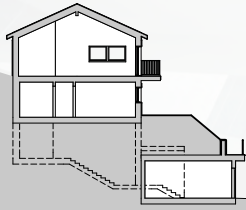


Situation Gesamtüberbauung

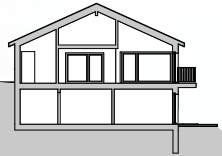


Geländeschnitt Gesamtüberbauung

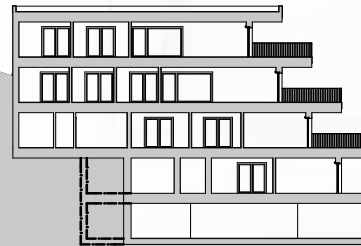
EFH
Häuser A - I



EFH + DEFH
Häuser J - R



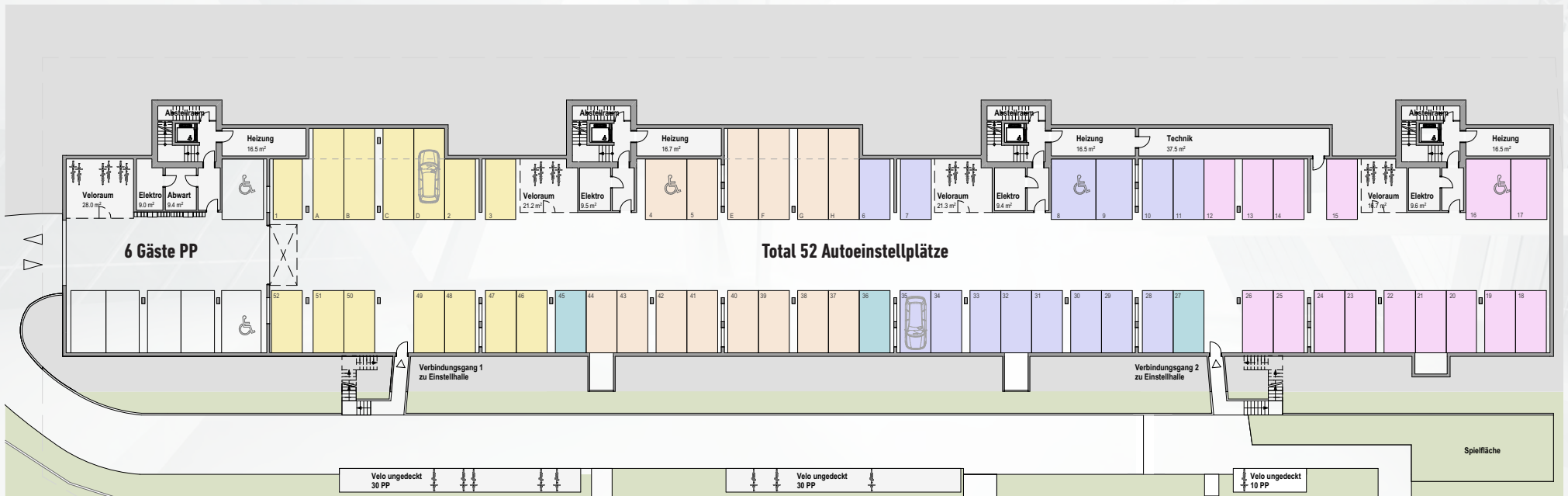
MFH
Häuser 4 - 7



MFH (WA)
Häuser 1 - 3

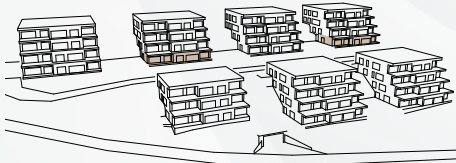


Autoeinstellhalle - Niveau 4



	Haus 4:	14 PP		Haus 6:	14 PP
	Haus 5:	14 PP		Haus 7:	15 PP
	e-Mobility:	3 PP			

Häuser 5 + 7 | EG

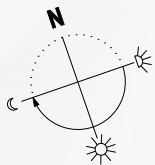


3 1/2-Zimmer Wohnung (Südost)

W 5.2 / 7.2

Nettowoohnfläche	92.5 m ²
Reduit	4.0 m ²
Sitzplatz	48.1 m ²
Keller	9.7 m ²

Sanitärbudget	CHF 16'500.-
Küchenbudget	CHF 22'500.-



Häuser 4 + 6 | 1. OG

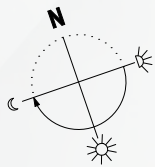


4 1/2-Zimmer Wohnung (Südost)

W 4.4 / 6.4

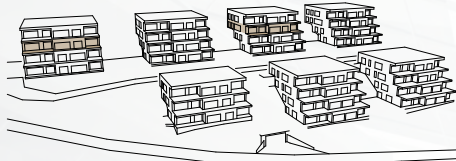
Nettowoohnfläche 117.6 m²
 Terrasse 22.3 m²
 Keller 9.2 m²

Sanitärbudget CHF 15'500.-
 Küchenbudget CHF 22'500.-



0 1.25 5m
 M 1:125 | 1 cm = 1.25 m

Häuser 4 + 6 | 2. OG

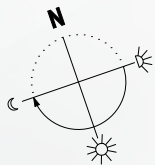


4 1/2-Zimmer Wohnung (Südwest)

W 4.5 / 6.5

Nettowoohnfläche 112.9 m²
 Terrasse 16.2 m²
 Keller 9.7 m²

Sanitärbudget CHF 16'500.-
 Küchenbudget CHF 22'500.-



0 1.25 5m
 M 1:125 | 1 cm = 1.25 m



Häuser 4 + 6 | 2. OG

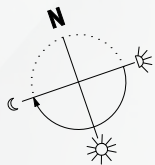


4½-Zimmer Wohnung (Südost)

W 4.7 / 6.7

Nettowoohnfläche 112.9 m²
 Terrasse 14.1 m²
 Keller 11.1 m²

Sanitärbudget CHF 16'500.-
 Küchenbudget CHF 22'500.-



0 1.25 5m
 M 1:125 | 1 cm = 1.25 m

Häuser 5 + 7 | 2. OG

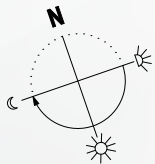


4 1/2-Zimmer Wohnung (Südwest)

W 5.5 / 7.5

Nettowoohnfläche 113.1 m²
 Terrasse 16.2 m²
 Keller 9.7 m²

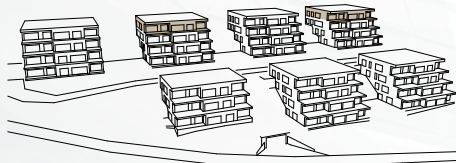
Sanitärbudget CHF 15'500.-
 Küchenbudget CHF 22'500.-



0 1.25 5m
 M 1:125 | 1 cm = 1.25 m



Häuser 5 + 7 | Attika

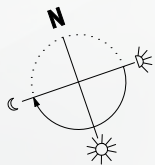


3 1/2-Zimmer Wohnung (Südost)

W 5.8 / 7.8

Nettowoohnfläche 99.7 m²
 Reduit 3.3 m²
 Terrasse 16.2 m²
 Keller 16.4 m²

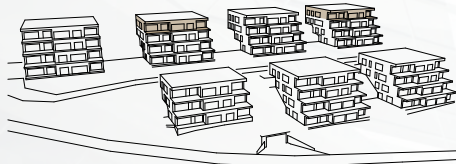
Sanitärbudget CHF 15'500.-
 Küchenbudget CHF 22'500.-



0 1.25 5m
 M 1:125 | 1 cm = 1.25 m



Häuser 5 + 7 | Attika

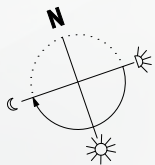


3 1/2-Zimmer Wohnung (Südwest)

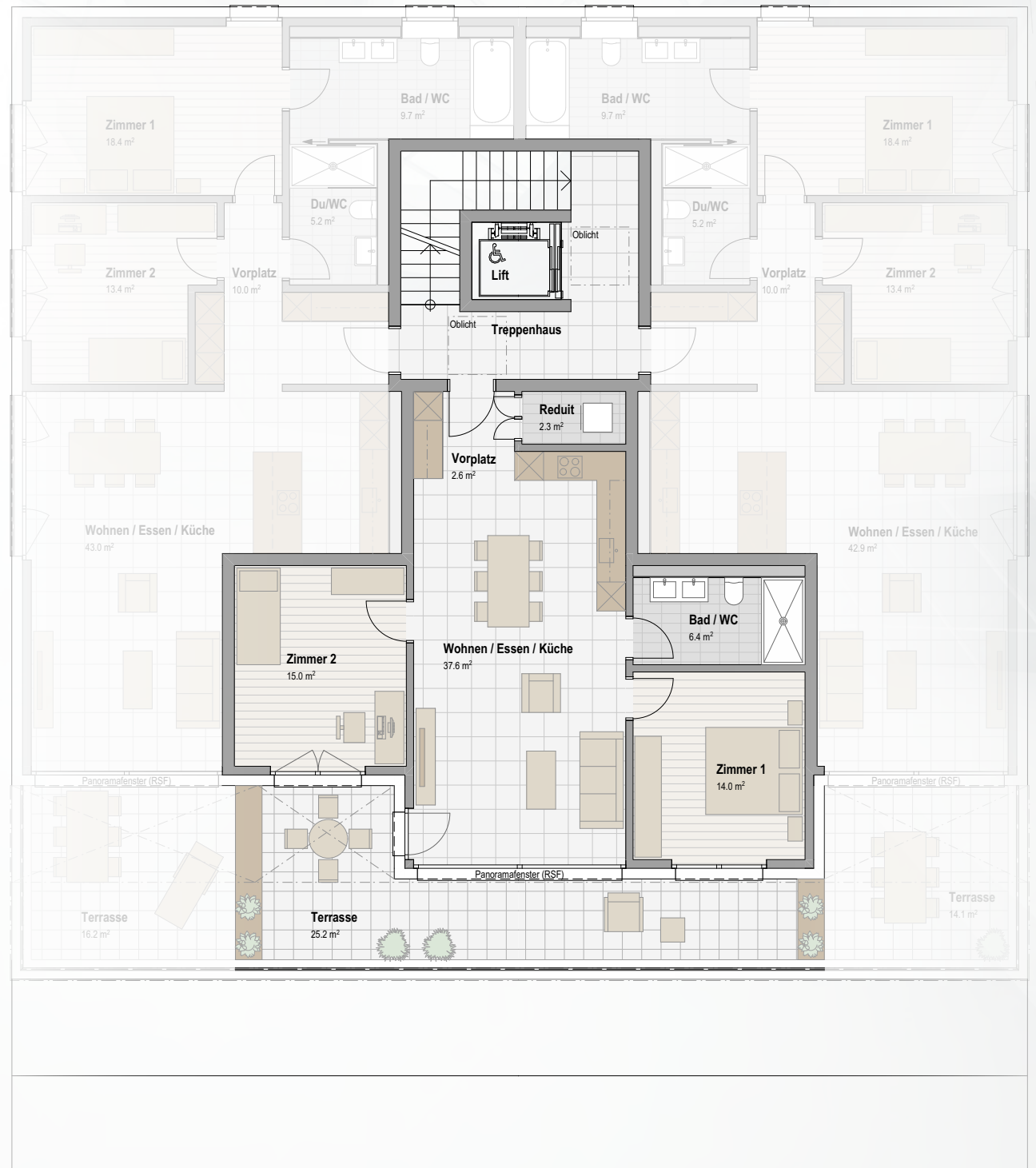
W 5.9 / 7.9

Nettowoohnfläche 77.9 m²
 Terrasse 25.2 m²
 Keller 10.3 m²

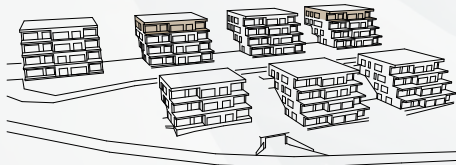
Sanitärbudget CHF 10'500.-
 Küchenbudget CHF 22'500.-



0 1.25 5m
 M 1:125 | 1 cm = 1.25 m



Häuser 5 + 7 | Attika

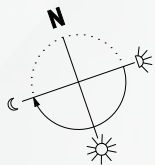
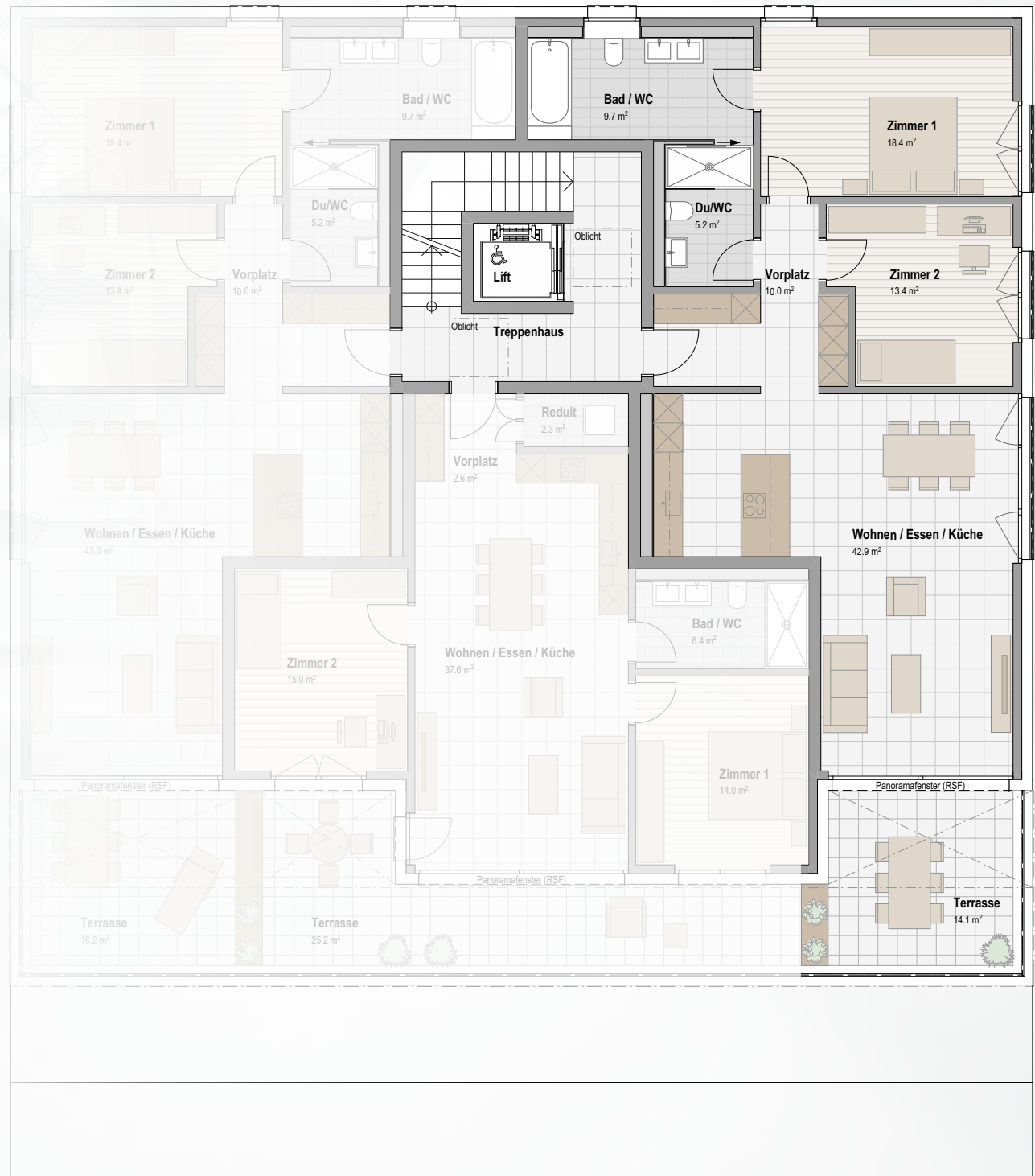


3 1/2-Zimmer Wohnung (Süd)

W 5.10 / 7.10

Nettowoohnfläche 99.6 m²
 Reduit 3.3 m²
 Terrasse 14.1 m²
 Keller 16.3 m²

Sanitärbudget CHF 15'500.-
 Küchenbudget CHF 22'500.-



0 1.25 5m
 M 1:125 | 1 cm = 1.25 m